

ESTD. 1958



Cultar[®]

Manufacturer & Exporter

60
Years
of Success

NARANG SCIENTIFIC WORKS PRIVATE LIMITED

MAINTENANCE MANUAL

HIGH PRECISION TEMPERATURE CONTROL EQUIPMENT FOR
MEDICAL, INDUSTRIES & RESEARCH LABORATORIES



WHO GMP
compliant company



NSW-125

THERMOSTATIC WATER BATH
(SEROLOGICAL WATER BATH
& SUPER DELUXE MODEL)

www.nsw-india.com

OPERATING INSTRUCTIONS & WARRANTY CARD

Narang Scientific Works Pvt. Ltd.

GI-111, Mayapuri Industrial Area, Phase-II,
New Delhi-110064 (India)

Tel : +91-11-28112608, 28112487, 28111589

Email : sales@nsw-india.com, nswindia@rediffmail.com

NSW-125

THERMOSTATIC WATER BATH

(Serological Water Bath) & Super Deluxe Model

NSW -125



NSW -125 (Super Deluxe)



INTRODUCTION

The Temperature range of the water bath is 5°C above ambient temperature to 100°C with an accuracy of 0.5°C. This bath is suitable for the Washerman, Kolmer and Khan Test inactivation's, Paraffin Embedding and many other applications in the laboratories.

PARTS IDENTIFICATION

PART IDENTIFICATION FOR (THERMOSTTIC WATER BATH)

1. Indicator main (Red)
2. On-off switch
3. Control indicator (Green)
4. Thermostat
5. Connector pins
(On the right side)

PART IDENTIFICATION FOR SUPER DELUXE MODEL

1. Indicator Main (Red)
2. Control Indicator (Green)
3. On-off Switch
4. Digital Temp. Controller
cum Indicator
5. Aluminium Rod for Motor Clamping
6. Mounting Rod Clamp
7. Stirrer Motor with s/s Rod
8. Speed Regulator
9. Lid made of s/s (304 qlty.)
10. Connector Pin

TECHNICAL DATA

Model	NSW 125
Working Temp.	5°C above ambient to 100°C
Accuracy	0.5°C
Electric Supply	200-220 V AC 50 Hz
Connected Load	1 to 2 KW

CONNECTED LOAD KW

Size	KW	Liters
300 x 250 x 175mm	1	14
330 x 300 x 175mm	1	18
455 x 300 x 175mm	1.5	25
605 x 300 x 175mm	2	32

■ GENERAL

Unwrap the Corrugated paper and polythene from the Water Bath, then take out packing material lying inside the working space of the Bath. After removing the cover clean the Water Bath with clean piece of cloth inside & outside material. One end of the cable has heavy duty connector and at the other ends three pin top plug.

■ OPERATING INSTRUCTION

Temperature setting knob (Thermostat): Now, switch "ON" the ON/OFF switch. You will find red indicator glowing, it means the power supply is alright. If red indicator does not glow please check your power source.

When you find red indicator glowing please rotate thermostat clockwise then you will also find that green control indicator is glowing. It's marking are as under:

At Mark -	2	20°C
At Mark -	3	30°C
At Mark -	4	40°C
At Mark -	5	50°C
At Mark -	6	60°C
At Mark -	7	70°C
At Mark -	8	80°C
At Mark -	9	90°C
At Mark -	10	100°C

Now, set the thermostat clock-wise to get temperature required. Suppose you want to set the temperature at 60°C then rotate the knob at Mark 6. you may get temperature 59°C or 61°C. If, the desired temperature is not being attained. then please inform our nearest dealer who will assist or to our company who well assist you.

■ HOW TO OPERATE SUPER DELUXE MODEL

HOW TO FIT STIRRER This water bath has been supplied with stirrer motor and mounting Rod Clamps etc. This stirrer motor should be mounted from the back side of water bath after fixing aluminium rod in the two rings at the back. Two pin plug fitted with motor should also be connected two pin socket fitted at the back of water bath.

■ SETTING OF DIGITAL TEMPERATURE CONTROL CUM INDICATOR (OPTIONAL)

- 1 These Water Bath are suitable to work upto maximum 100°C. This is supplied with temp. controller cum indicator which shows (S.V.) set value of your temp. (In Green) and (P.V.) process value which is (In Red) current running temp.
- 2 To Set desired temp. suppose 95°C, you need to use arrow keys on extreme right up & down keys. Other key are used to change the settings of the controller which is already done by our company for easy use. You can also lock the temp. If, your desired temp. is always fixed. For other settings of all controller. Kindly contact the company or go through user manual of Digital temperature controller.
- 3 Once your main are on (Red Indicator is On) you can set the temp. by up arrow key. The lid of the water bath should not be removed and also do not disturb the key of Digital Controller Unit until the desired temperature is attained.
- 4 It should attain the temperature 95°C within 25 - 30 Minutes, if it take more time if then voltage of the main supply is incorrect. The progress in the heating up of the water bath can be observed on the digital controller.

■ CONTROL INDICATOR

It is connected to temperature controller and shown the working of the thermostat / digital temp. controller.

■ IMPORTANT INSTRUCTION

- 1 Always use distilled water in water tank for longer life of heating element of water bath.
- 2 Water Bath should not be operated without Water in tank.
- 3 Water Bath should be properly earthed with 3 pin plug supplied with Bath i.e. in the socket earth terminal should be properly earthed.
- 4 Never try to set temperature above 100°C in the Thermostat or Electronic Digital Temperature Controller.

■ TROUBLE SHOOTING

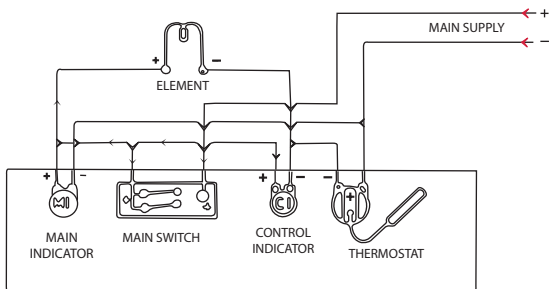
- 1 Main indicator does not glow when - power is connected-check main source of power.
- 2 Main indicator glows-Digital temperature controller displays 1-PT- 100sensor is defective.
- 3 All the control and every indicators are glowing but heating is slow check-voltage.

Incase you feel any kind of difficulty please do not hesitate to contact us. We shall be too pleased to assist you without any obligation.

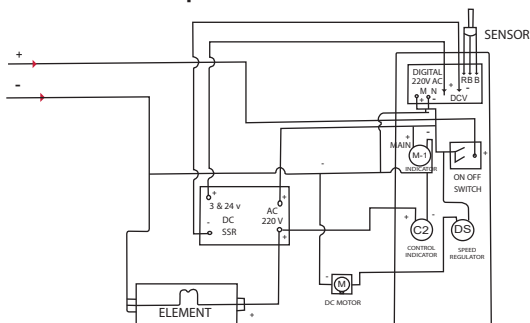
NSW-125 THERMOSTATIC WATE BATH (SEROLOGICAL WATER BATH) & SUPER DELUXE MODEL

Diagram

NSW-125 Thermostatic Wate Bath (Serological Water Bath)



Super Deluxe Model



TERMS OF WARRANTEE

ESTD. 1958



NARANG SCIENTIFIC WORKS PVT. LTD. guarantee the high quality and workmanship of each unit for a period of one year subsequent to the date of delivery by the company. During this period, faulty material will be replaced free of charge. This guarantee does not extend to components that are subject to wear and tear in the course of normal operation or due to improper treatment /maintenance as per instructions not followed.

- 1 The manufacturer is only responsible for effects on the safety, reliability and the performance of the instrument.
- 2 Installation, additions, adjustments, modifications or repairs are carried out by personnel authorized by the manufacturer.
- 3 The electrical installations within the room concerned satisfy the requirements laid down by ISO/CE.
- 4 The appliance is used in full accordance with the instruction manual which is solely a guide and no substitute for professional training. The safe and effective use of this product largely depends on the skill of the operator. We are not liable for any damages due to mishandling or improper and unauthorized use.
- 5 The company reserves the right to change technical specifications, designs without prior notice.

Note: In case you feel any kind of difficulty please do not hesitate to contact us. We shall be too pleased to assist you without any obligation. Our Instruments are guaranteed for 12 months from the date of purchase.

WARRANTEE CARD

Bill No. _____

Stamp:

Serial No. _____

Date of Purchase _____

Dealer Name _____